



# Dual-Valve Liquid Sampler w/ Cable Control

## INTRODUCTION

Thank you for choosing AMS, Inc.

## APPLICATION

- The manual Dual-Valve Liquid Sampler was designed to take discrete level samples at depths of up to twenty-five feet in drums, tanks, ponds, lagoons, and other surface water bodies.
- This sampler is also recommended for use in monitoring wells with inner diameters of 2" or larger.

## DESCRIPTION

The Dual-Valve Liquid Sampler was designed to take discrete level samples at depths of up to 25'. The two valves that open and close in unison were designed to minimize the possibility that samples may be disturbed when retrieved. This sampler is constructed of stainless steel and fluoropolymer. They are heavier than most bailers, and the weight allows for an easy, straight deployment into liquids. The sampler comes partially assembled, so it must be fully assembled before operating.



## SAMPLING PROCEDURE

- Once the Liquid Sampler has been fully assembled (refer to **Figure 2**), slowly lower the sampler to the desired depth. If a shallow sample is required, the excess control cable must be fully extended. If the cable isn't fully uncoiled, the sampler will not operate properly. Be sure to protect the cable against any sharp radius bends.
- Open the valves in the Liquid Sampler by pulling on the "T" handle. (Refer to **Figure 1**.)
- Allow enough time for the Liquid Sampler to fill and fluid to stabilize.
- Close the Liquid Sampler by releasing the "T" handle. It may be necessary to push in the "T" handle.
- Remove the fluid from the Sample Chamber by opening the Metering Valve. Or simply use the Fluo. Container Caps to cap off the Sample Chamber, thereby saving the sample for later analysis.
- Clean the Liquid Sampler according to proper protocol and repeat the procedure to retrieve additional samples.

## INCLUDED PARTS

- (1) 12" Fluoropolymer Liquid Sampler Container
- (2) Fluoropolymer Liquid Sampler Container Cap
- (1) Cable Control Fitting Kit
- (1) 25' of 1/16" SST Cable

- (1) 25' of 3/8" X 1/4" Liquid Sampler Fluoropolymer Tube
- (1) Liquid Sampler Cable Control Handle
- (1) Valved Liquid Sampler Top Cap Complete
- (1) Valved Liquid Sampler Extraction Cap Complete

**SKU: 2200.20**

Agricultural  
Geotechnical  
Environmental  
Groundwater

105 Harrison St.  
American Falls, ID 83211

Toll Free: 800-635-7330  
Office: 208-226-2017

ams@ams-samplers.com

[www.facebook.com/amssampling](https://www.facebook.com/amssampling)

[www.instagram.com/amsinc/](https://www.instagram.com/amsinc/)

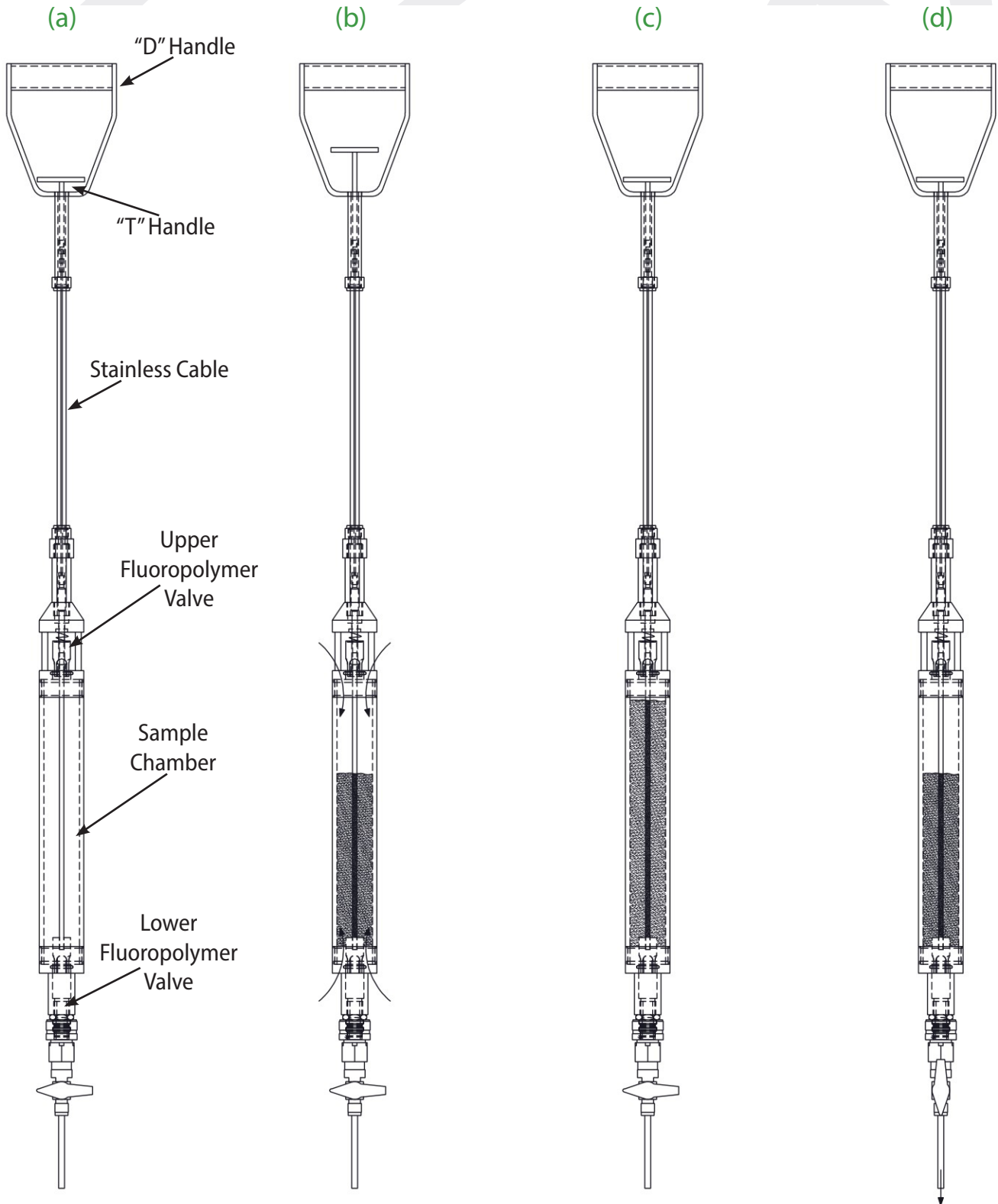
[www.linkedin.com/company/ams-inc/](https://www.linkedin.com/company/ams-inc/)

[www.ams-samplers.com](http://www.ams-samplers.com)

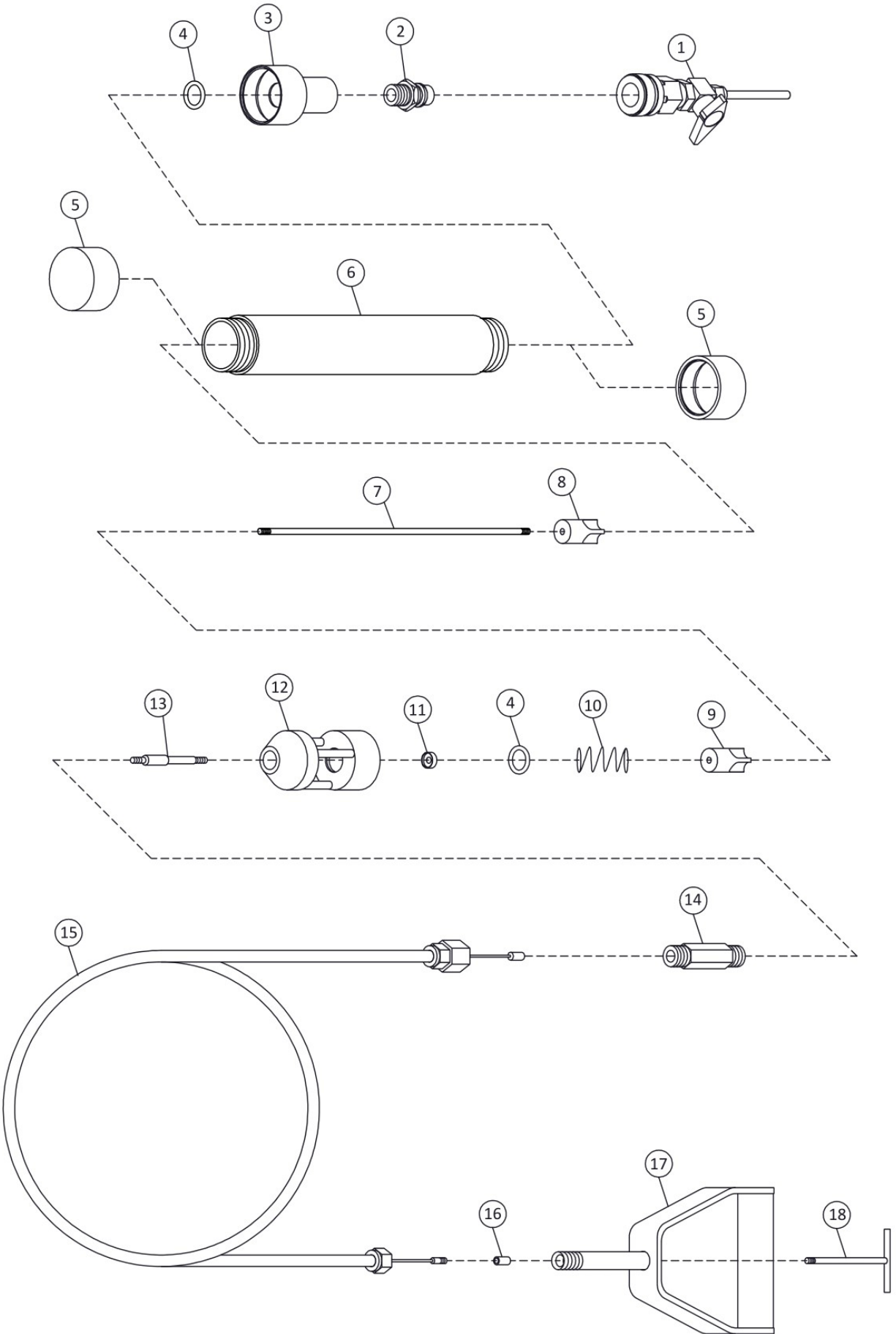
## SAMPLING PROCESS DIAGRAMS (Refer to Figure 1)

- (a) The Liquid Sampler is in the sampling position with both valves closed.
- (b) Both valves are opened and fluid is entering the chamber while gas or air exits the chamber.
- (c) Both valves are closed.
- (d) The Liquid Sampler has been retracted, Metering Valve is opened, and fluid is being discharged.

### DUAL-VALVE LIQUID SAMPLER w/ CABLE CONTROL (Figure 1)



DUAL-VALVE LIQUID SAMPLER w/ CABLE CONTROL ASSEMBLY (Figure 2)



ITEM #	DESCRIPTION
1	(1) Metering Valve
2	(1) 1/2" Male Quick Connect
3	(1) Lower Valve Housing
4	(2) "O" Ring
5	(2) Fluoropolymer Liquid Sampler Container Cap
6	(1) 12" Fluoropolymer Liquid Sampler Sample Chamber
7	(1) Valve Tie Rod
8	(1) Lower Fluoropolymer Valve
9	(1) Upper Fluoropolymer Valve
10	(1) 5/8" Spring
11	(1) 1/2" Seal
12	(1) Upper Valve Housing
13	(1) Upper Valve Housing Control Rod
14	(1) 3/8" X 3" NPT
15	(1) Cable Control Apparatus
16	(1) Cable Control Coupler
17	(1) Cable Control "D" Handle
18	(1) Cable Control "T" Handle