

Auto-Field Sampler (AFS)

Soil Probe Replacement Instructions

- **Warning:** Ensure the soil probe is fully retracted and the **Power Unit** is turned off before beginning. Failure to do so may result in serious injury or death.
- Remove the six bolts securing the **Mast** cowling on the soil probe side. See **Figure 7.1 A**.

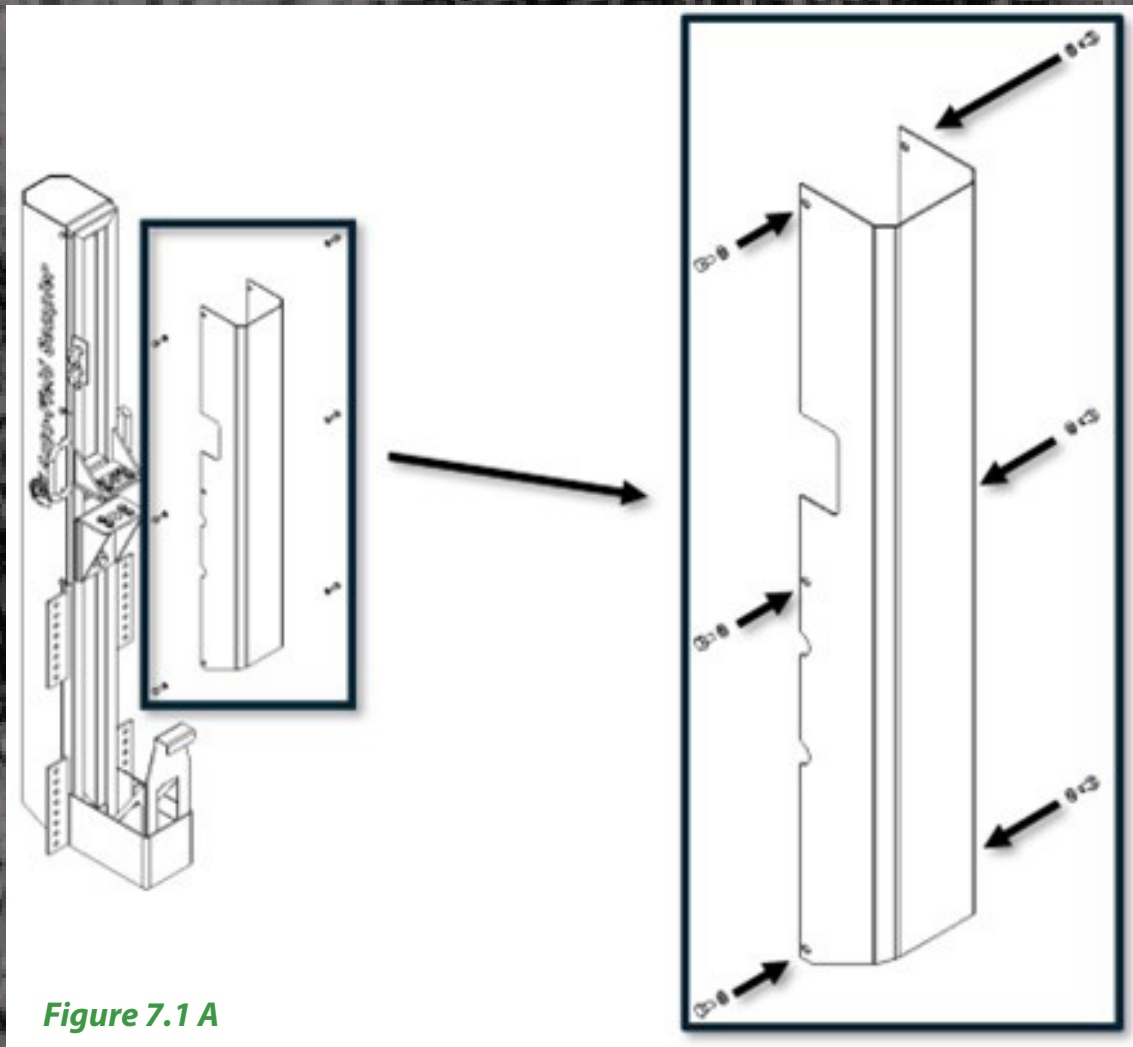


Figure 7.1 A



**Agricultural
Geotechnical
Environmental
Groundwater**

105 Harrison St.
American Falls, ID 83211

Toll Free: 800-635-7330
Office: 208-226-2017

ams@ams-samplers.com

facebook.com/amssampling

instagram.com/amsinc

linkedin.com/company/ams-inc

youtube.com/@amssamplersusa

ams-samplers.com

- Remove the four bolts securing the plunger rod to the *Mast* frame.
 - Lift the plunger rod vertically until the tip clears the plunger mounting plate. See *Figure 7.1 B*.

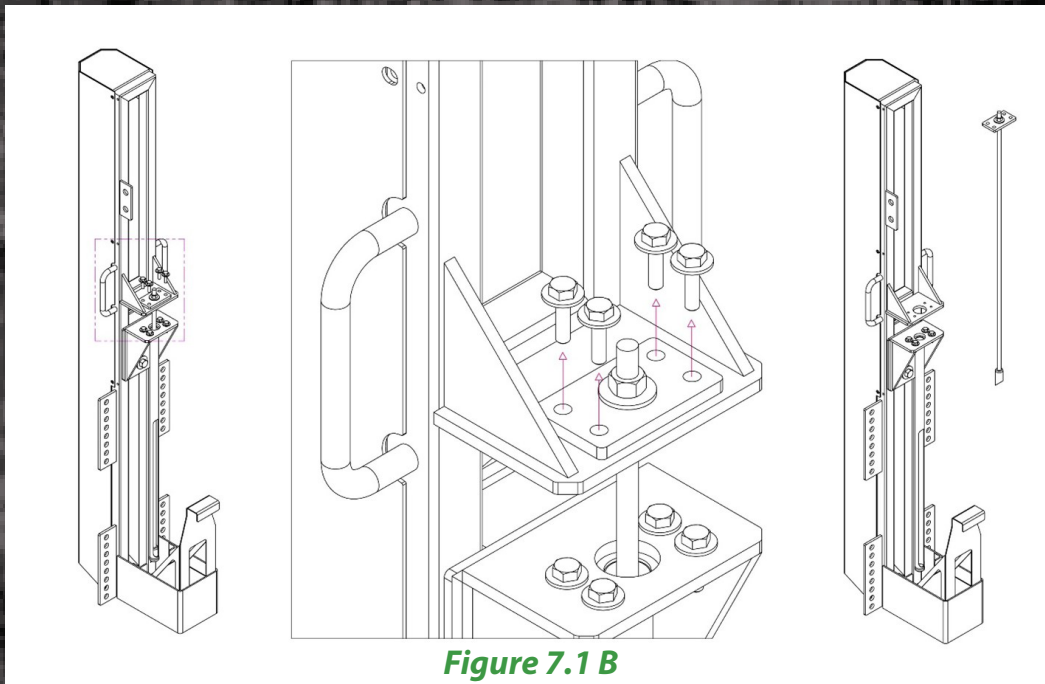


Figure 7.1 B

- Remove the four bolts securing the soil probe to the slide head.
 - Once unbolted, lift the soil probe out. See *Figure 7.1 C*.

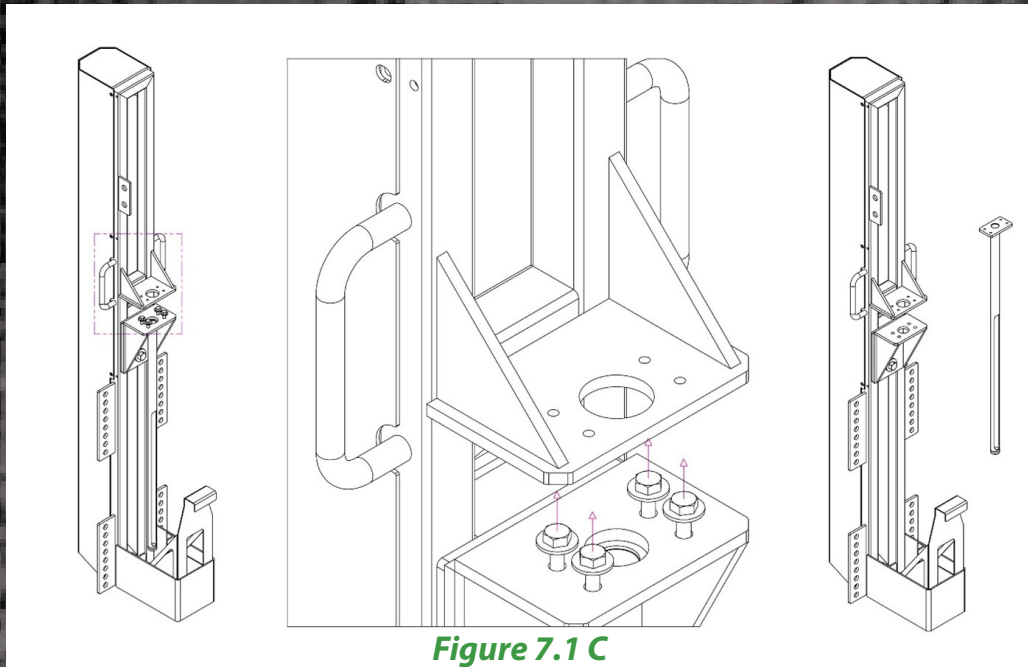


Figure 7.1 C

- Install the replacement soil probe and securely fasten it to the slide head.
- Reinstall the plunger rod to the *Mast* frame.
 - **Note:** Rotate the plunger rod so the angled side of the tip faces the collection container. Improper alignment may cause the sample to eject incorrectly.
- Reattach the *Mast* cowling.
- The soil probe replacement's now complete.